

INNOVATION · MANUFACTURE · INTEGRATION · SERVICE



AutoLumo *A2000* Plus

AUTOMATIC CHEMILUMINESCENCE IMMUNOASSAY SYSTEM

Autobio Diagnostics Co., Ltd.

Offer more than 400 in vitro diagnostic products including CLIA(microplate based and magnetic particle based), ELISA, Microbiology and Biochemistry. As an ISO9001, EN ISO13485 and GMP certified manufacturer, Autobio supplies high quality products through its well established sales network and is renowned as a reliable partner. For details please visit www.autobio.com.cn

Autobio Diagnostics Co., Ltd. | NO.87 Jingbei Yi Rd | National Eco&Tech Zone | Zheng zhou City | China 450016
T: +86-371-6798-5313 | E: info@autobio-diagnostics.com / export@autobio.com.cn | W: www.autobio.com.cn

Flyer A2000 P 20191229e



AutoLumo A2000 Plus



One choice
for more convenience

Specification

Throughput: up to 200T/H
Time to 1st result: approximate 20 mins
RV loader capacity: 1000 pcs
Sample loading capacity: 100

Sample pipette volume: 5-150ul
STAT available
Sample dilution factor: 10-100
Liquid level detection and clot detection

Onboard reagent capacity: 24 racks
Onboard reagent storage: 4-10°C
Real-time replacement of reagent (by appointment)
Reagent residue calculation: by the rest number left

Substrate: Substrate A+B
Substrate volume: 100ml for each
Substrate pipetting volume: 50ul fixed, CV<2%
Substrate switching: 2 sets of substrates available
on board by automatic switch



Carry-over: <1ppm
Incubation temperature: 37°C ± 0.5°C
Reaction mode: 1 step and 2 steps
Size (W*D*H, mm): 1374*950*1200
Weight: approximate 390kg
Power supply: AC 100-230V, 50/60Hz, 800VA
Working temperature: 18-30°C
LIS communication: based on RS232 port



One choice
for more convenience



RV Loading Module

Independent reaction vessel
Up to 1000 pcs per batch with continuous loading
Automatically supply RV by "on-the-fly" chain
Intelligently detect the amount of RV



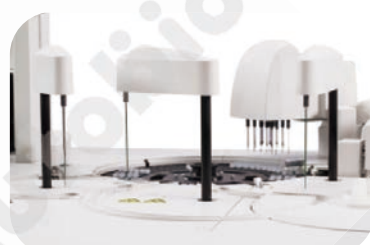
Incubation and Reaction Plate

192 reaction positions in 3 rings
Constant 37°C incubation



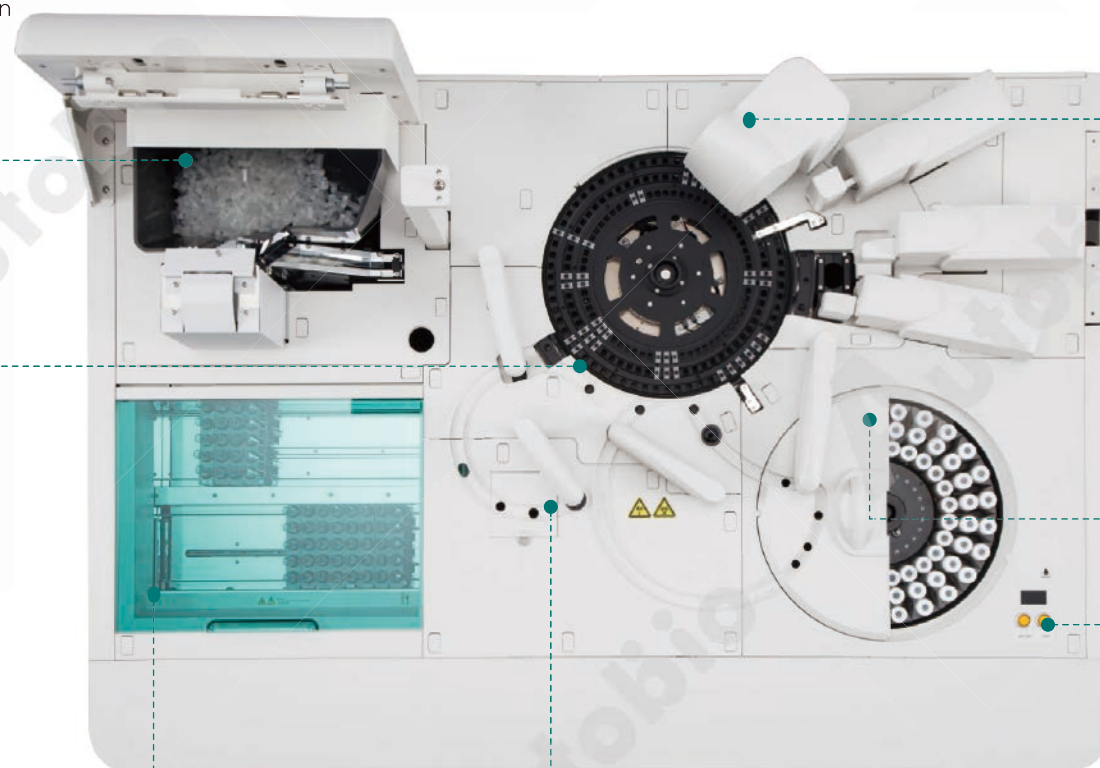
Sample Loading Module

5 sample positions per pack
Up to 100 samples loading capacity per batch
Priority position for STAT samples
Up to 200 tests processing capacity per hour



Fixed Pipette Probe

Excellent rinsing system makes carry-over <1ppm
Liquid level and blood coagulation detection system
Sampling volume : 5ul-150ul
On board sample dilution up to 100 times



Washing Station

12 Channels washing system
5 times magnetic separation cleaning



Reagent Module

Up to 24 reagent positions on board with refrigeration at 4-10°C
Continuously mixing the magnetic particle suspension
Dual substrate switched automatically



Online Reagent Changing

Onboard change of reagent by appointment
without hatch-open



Cabins for Consumables and Wastes

Ordinary wash, System wash, Distilled wash, Liquid waste,
Dual substrate



AutoLumo *A2000* Plus



Powerful Software Optimizes Your Laboratory

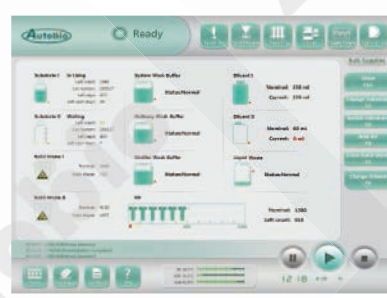
Instrument Software

- Multi-Language interface, easy to use
- Various data processing mode
- Intelligent display system
- Perfect operation menus
- Intact QC management

- Temperature and consumables monitoring service
- Edit, storage, search and print function
- Alarm of consumables insufficient



- Abnormal test result display
- Instrument trouble position system
- Connection to LIS via COM



Menu

Items

Hepatitis B

- HBsAg
- Anti-HBs
- HBeAg
- Anti-HBe
- Anti-HBc
- Anti-HBc IgM
- HBV PreS1-Ag

Infectious disease

- Anti-TP
- Anti-HCV
- Anti-HIV
- HAV IgM
- HEV IgG
- HEV IgM
- HIV Ag/Ab
- Combo

TORCH

- CMV IgM
- HSV-1 IgM
- HSV-2 IgM
- Rubella IgM
- Toxo IgM
- CMV IgG
- HSV-1 IgG
- HSV-2 IgG
- Rubella IgG
- Toxo IgG

Thyroid

- T4
- TSH
- T3
- FT3
- FT4
- Anti-TG
- Anti-TPO
- TG
- rT3 *

Growth

- IGF-1
- HGH

Fertility

- E2
- PRL
- Testosterone
- LH
- FSH
- PRG
- β-hCG
- DHEA-S
- SHBG
- 17α-OHP

Hypertension

- Cortisol
- ACTH
- Aldosterone
- Renin
- Angiotensin II

Tumor marker

- AFP
- CEA
- CA50
- CA125
- CA15-3
- CA19-9
- β 2-Microglobulin
- CA72-4
- SCCA
- NSE
- CYFRA21-1
- tPSA
- fPSA
- HE4
- CA242
- Pepsinogen I
- Pepsinogen II
- ProGRP*

Diabetes

- Insulin
- C-Peptide

Bone Metabolism

- Osteocalcin
- Calcitonin
- 25-OH Vitamin D
- PTH

Hepatofibrosis

- Col IV
- PIIINP
- HA
- LN
- CholyIglycine*

Cardiac markers

- CK-MB
- cTnI
- MYO
- NT-proBNP
- BNP *
- HS-cTnI *

Pre-Natal

- Free β-hCG
- P-AFP
- uE3 *
- PAPP-A *

Anemia

- Ferritin
- Folate
- Vitamin B12

RTI & other infection

- M. pneumoniae IgG *
- M. pneumoniae IgM *
- C. pneumoniae IgM *
- L. pneumophila IgM *
- Coxsackie B IgM*
- Enterovirus 71 IgM*
- Influenza A IgM *
- Influenza B IgM*
- RSV IgM *

Others

- hs-CRP
- PCT
- TB-IGRA
- AMH

One choice
for more convenience

* coming soon